

D-Tech RFIQ™

improves alarm handling capability for libraries by **eliminating** false alarms and using the ILS system to activate/deactivate security.



RFIQ™ replaces traditional EM or RF security systems and has no metal and electronic interference issues.

The RFIQ™ antenna system will provide an obvious theft deterrent with an aesthetically pleasing “see-thru” design.

Features:

- Only **3** Components (Security Gates, Tags, Reader pad)
- No Magnets – Security Strips – Check Cards or Pockets need!
- Works with complete range of iTeam/D-Tech 13.56 MHz RFIQ™ labels.
- Gates Available in Steel/Plexi or solid Plexi-glass lit with custom colors.
- iTeam’s advanced digital radio frequency smart technology uses state of the art digitally enhanced “receiver to chip” technology to ensure superior detection with **false alarm-free** protection
- Integrated alarm lights and alarms provide individual aisle identification.
- Existing Security Strips and Tags will not interfere with the system.
- **Easy to install and operate!** Antennas mount as a “free standing” unit bolted to the floor, with deactivation pad located on top or fixed under circ desk counter top

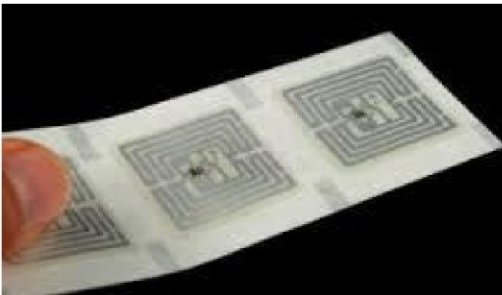




RFIQ™ System Security at its Best

Specifications:

Hardware:



	Antenna	Reader 1 watt	Reader 4 watt	Multiplexer MUX	Light option regulator
Height	69" (1750mm)	7.25" (184mm)	13" (330mm)	3.5" (89mm)	3.75" (95mm)
Width	4.3" (109mm)	4.3" (109mm)	7.1" (180mm)	4.3" (109mm)	4.3" (109mm)
Length	19.5" (495mm)	10.6" (269mm)	4.7" (119mm)	7.2" (183mm)	7.1" (180mm)
Weight	50 lbs.	3 lbs.	5 lbs.	2 lbs.	3.75 lbs.



Material:

Frame: transparent acrylic panel
Lower base: Stainless Steel

Power Supply:

110 V ac, 15 amps

Electronics:

PR101/TS400, light regulator and power unit, multiplexer for multiple aisle configurations.

System Entrance Coverage

2 Security Gates = 3ft. - 5.5 ft.

3 Security Gates = 6ft. – 10ft.

Mount no closer than 18 inches from door frame recommended.

Power Supply

One outlet per electronics – dedicated, grounded power required.

One per light unit-same as above, adjacent to above unit, 15 amp fused outlet.

AFI

Recommended AFI mode supported for future migration to RFID.

Location

The system location and layout is to be detailed and agreed upon by ITeam and customer. Can be mounted close to doors and entrance/exits. ADA accessible.

Detection width

RFIQ security gates are transceivers, two antennas can cover a 3 to 6 foot Entrance and detect to either side 2.5 ft.



NO MAGNETS – NO CARDS – NO HASSELS = RFIQ

**Contact: Chris Gabriel 386-451-1361
Murphy Security Solutions**