

# Thermal Imaging People Counter

**D**-Tech's thermal people counters are essential for accurate counting of patrons utilizing your library. Circulation numbers no longer give an accurate picture of library usage. Today, funding agencies at all levels want information that justifies the expenditure of funds. Whether patrons are doing research, using public computers or attending meetings, their usage needs to be counted for public records and accountability. Our thermal people counter technology provides enhanced accuracy in counting and is very reliable.

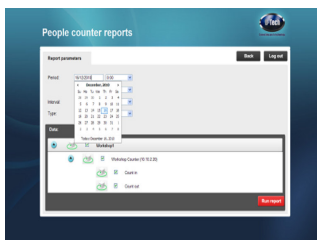
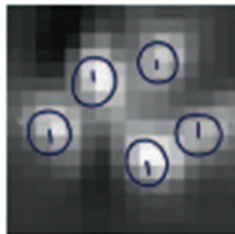
Intuitive and easy-to-use software allows constant updating of information from 1 to 99 counters remotely working over your network.

#### Features:

- Works with varying ceiling heights to suit most designs in entrance and exits
- D-Tech's advanced thermal imaging counters have surpassed many tests being 98.3% effective after being measured for accuracy over a period of 6 months.
- Also tested and recorded as being 22% more effective than conventional beam type counters
- Integrated into a ceiling mount resembling a smoke detector the device works over IP network
- Dynamic D-Tech developed software polls the device(s) for the count data every 15 minutes.
- Count data is shown in standard graph format with a facility for the count data to be exported into Excel for further use with graphs and pivot tables.



# Thermal Imaging People Counter



## Specifications:

### Unit

#### Thermal Counter

**Diameter** 5.5" (140mm)  
**Depth** 1.3" (30mm)  
**Weight** 1.3 lbs. (0.6kg)

### Material:

Casing: Acrylic outer casing with mounted PCB boards and connectors internally and shielded ABS industrial grade plastic case

### Power Supply:

100 –120 VACS, 60 Hz.

### Electronics:

All mounted inside a ceiling mounted detector case, supporting thermal material which measures floor temperature and ambient temperature flow passing beneath for an accurate directional count.

### System

Thermal Counter units are colored white and ceiling mounted, software to be deployed on specified Windows based PC minimum spec 2GHz Processor, 2GB RAM, 80GB HDD, OS Windows XP or 7<sup>32 BIT</sup> with SQL Express 2005 or 2008<sub>R2</sub>, .net 3.5 with service pack 1 and 2 installed.

### Power and Data Supply

One per thermal counter – one 100-120 VAC single, 5 amps.

One per thermal counter – one single IP addressed network point adjacent to aforementioned power outlet

### Polling

Count 'harvester' brings the requested count data to the main count software application viewable over web browser application

### Location

The thermal imaging counter location and layout is to be detailed and decided upon by the Project Manager in conjunction with the Library's Team.

**UL approved and FCC certified.**

### Thermal Counter Part Number:

\*Standard 60° DT10902

\*Up to ceiling height 157.5"

### Thermal Software Part Number:

\*One time purchase DT102089R

\*Links up to 99 counters, over same network, Windows XP and 7<sup>32 BIT</sup> supported