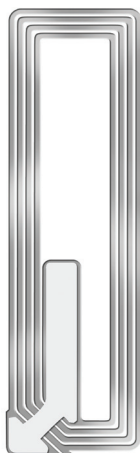


# **CLEAR ENHANCED PERFORMANCE LABELS**

**Clear Product Protection. Perfect Brand Promotion.**



3210 Clear EP Label

## **It's Clear...**

- Place Clear Enhanced Performance (EP) labels over barcodes - important data can still be viewed and scanned.
- Increase sales and reduce shrink through secure open merchandising.
- Preserve product branding.
- Apply labels in store or at source.
- Embrace a revolutionary new method of product protection.

Uses less aluminum, paper and plastics than standard labels; reduces waste by up to 65%

Provides a clean look that preserves product branding

View and scan barcode through clear window



Protect even the smallest merchandise

# CLEAR ENHANCED PERFORMANCE LABELS

## Setting the Standards

Checkpoint's EP labels represent a quantum leap in radio-frequency (RF) technology, providing retailers and manufacturers with the highest-performing RF labeling solutions on the market, including the world's smallest RF label.

Checkpoint has a solution for virtually every need and supports both hand application in-store or source tagging applications at the point of manufacture.



**EVOLVE**, the best-performing and most intelligent EAS platform available today



## EVOLVE and EP Labels: The Perfect Combination

When used in concert with Checkpoint's EVOLVE EAS platform, performance of Clear EP labels is increased by up to 60%.

### 3210 Clear EP Label Specifications \*\*\*

Frequency:	8.2 MHz
Label Size:	0.75 x 2.56 in. (19 x 65 mm)
Custom Print Options:	Yes
Designed for @ Source Integration:	Yes
Roll Count:	2,000
Case Count:	20,000



Checkpoint RF labels are classified into three groups defining performance, service level and added value. According to the classification the labels are branded with 1, 2, or 3 stars.

Standard Label \* / Premium Label \*\* / Specialty Label \*\*\*



**Murphy Security Solutions**  
1217 Robinhood Lane  
LaGrange Park, IL 60526  
Office: 708-482-4682  
[www.murphysecuritysolutions.com](http://www.murphysecuritysolutions.com)

### Checkpoint Systems, Inc.

101 Wolf Drive, P.O. Box 188  
Thorofare, NJ 08086

[www.CheckpointSystems.com](http://www.CheckpointSystems.com)



Helping Retailers Grow Profitably